

## Product Information

Our standard approved range of ProFuse water pipe includes:

OD (mm)	SDR 11 / 16 bar	SDR 17 / 10 bar	SDR 21 / 8 bar
75	✓	✓	✓
90	✓	✓	✓
110	✓	✓	✓
125	✓	✓	✓
140	✓	✓	✓
160	✓	✓	✓
180	✓	✓	✓
200	✓	✓	✓
225	✓	✓	✓
250	✓	✓	✓
280	✓	✓	✓
315	✓	✓	✓
355	✓	✓	✓
400	✓	✓	✓
450	✓	✓	✓
500	✓	✓	✓
560	✓	✓	✓
630	✓	✓	✓

SDR 26 and thinner walled pipes can be produced to order and other pressure ratings are available upon request

\*180mm SDR 21 is available in sticks only

## Product Customisation:

No two projects are ever the same so to meet our customer's unique requirements we can customise our ProFuse peelable water pipe in a number of ways:

### Variety of skin colours

Common skin colours are dark blue and black but other colours such as green and purple are also available in accordance with country-specific requirements or to identify different applications.

Stripes are available in any colour

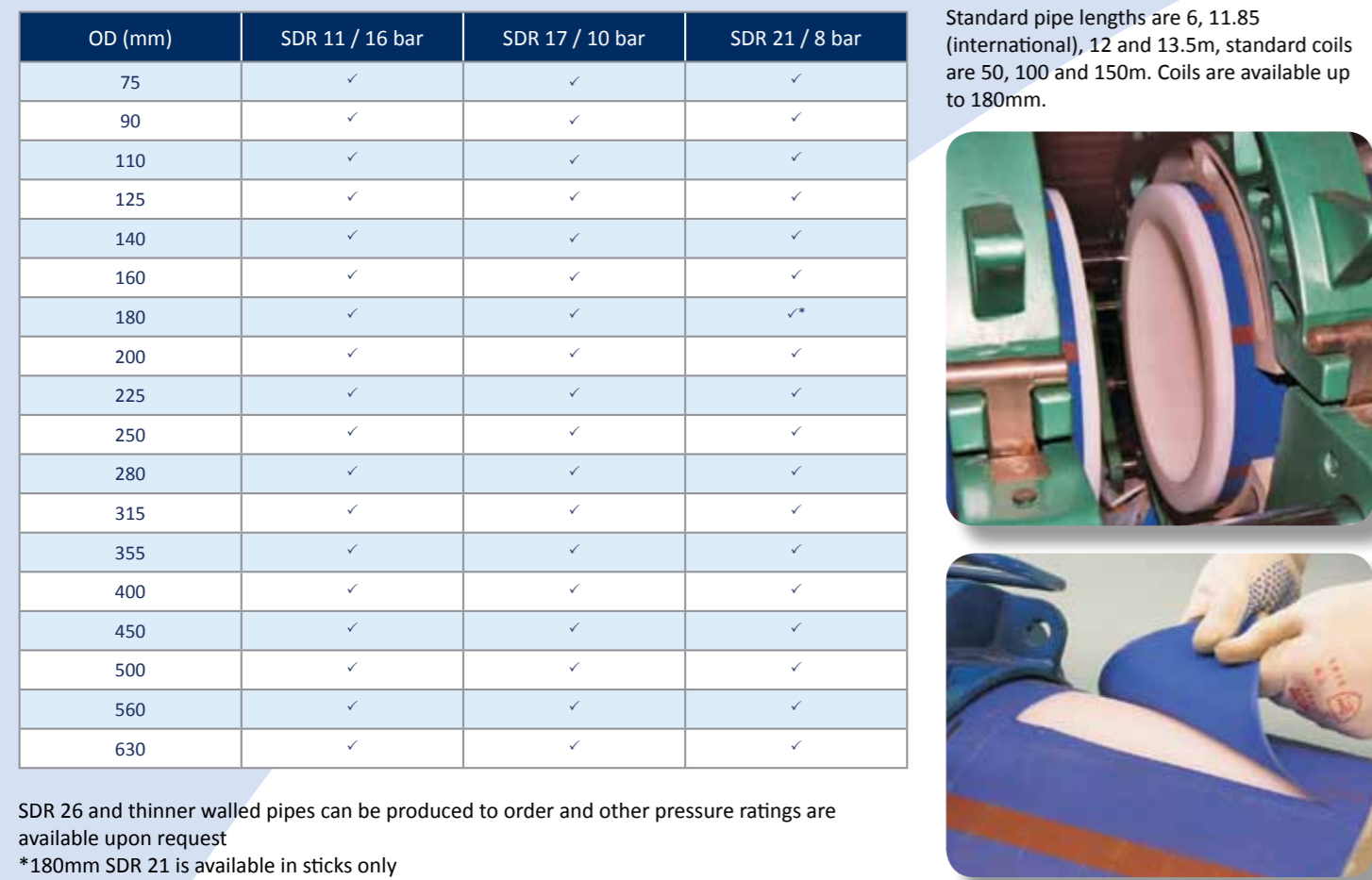
### Special pipe sizes

Special sizes of pipe and fittings can be developed for specific projects to offer the least cost installation.

For example, we have already developed special sizes including 296 and 440mm for close fit slip lining insertion

### Range extensions

Distributors and asset owners wishing to adopt the ProFuse technology should get in touch with us to discuss how we could potentially extend the ProFuse water range to meet your requirements



Standard pipe lengths are 6, 11.85 (international), 12 and 13.5m, standard coils are 50, 100 and 150m. Coils are available up to 180mm.

## Radius Systems - Pioneers in PE Pipe Technology

Radius Systems is a leading force in the design and development of plastic pipes for the utilities and construction industries. We take care of the entire pipe lifecycle - from design and manufacture through to installation and repair, our products are used in more than 100 countries around the world.

- Manufacturing facilities**  
 With several UK and international production sites, we have complete control over quality and speed, and the ability to meet the expectations of our clients
- Innovative approach**  
 We are leaders in our field with a history of research and new product development. Practicality, durability and adaptability are all high on our agenda and that of our clients
- Flexible product and service provision**  
 Our comprehensive range of services is designed to fit the variable demands of our client's developments including pipes, fittings, equipment sale or hire, training and support services
- Reliability and safety**  
 With over 40 years of design and manufacture, our clients know that they can count on us to meet not just their product and service needs, but also their delivery and safety requirements
- Outstanding customer service**  
 We have a dedicated Customer Services team who meet the exacting requirements of major utilities in the UK and overseas. Our service isn't just about the delivery of products; contact our team if you have a product or installation enquiry or a query post-delivery



For more information please visit our website: [www.radius-systems.com](http://www.radius-systems.com) or contact us:

### Head Office and Export Sales:

Radius Systems Ltd  
 Radius House  
 Berristow Lane  
 South Normanton, Alfreton  
 Derbyshire  
 DE55 2JJ UK  
 t: +44 (0)1773 582329  
 f: +44 (0)1773 812 343  
 e: [sales@radius-systems.com](mailto:sales@radius-systems.com)

### Middle East Sales:

Radiusenaat (Piping and Fittings) LLC  
 P.O. Box 93278  
 ICAD Business Hub B401  
 Mussafah  
 Abu Dhabi  
 UAE  
 t: +971 2 550 7153  
 f: +971 2 550 7152  
 e: [salesme@radiusenaat.com](mailto:salesme@radiusenaat.com)

### Northern Ireland and Republic of Ireland Sales:

Radius Plastics Ltd  
 Scarva Road Industrial Estate  
 Banbridge  
 County Down  
 BT32 3QD UK  
 t: +44 (0)28 4066 9999  
 f: +44(0)28 4066 9996  
 e: [salesir@radius-systems.com](mailto:salesir@radius-systems.com)

## Have you seen...



## ProFuse Peelable Water Pipe System

The solution for protection and non-scrape joining

Stockist Stamp

ProFuse peelable pipe is also available for gas applications. Please see the ProFuse Peelable Gas Pipe System brochure or contact your sales representative for more information.

The ProFuse water pipe system is a major advance in pipeline technology which reduces lifetime system costs by improving installation quality and system reliability.

At the heart of the ProFuse system is a high performance PE100 polyethylene pipe which has a unique peelable skin. This skin protects the pipe from the moment it is manufactured to beyond the point of installation and reinstatement.

During manufacture, the protective skin is added to the pipe through melt on melt technology. Applying the protective skin before the core pipe emerges from the die head, prevents pipe surface contamination, either through oxidation or from physical contamination with dirt.

The skin is easily scored using the ProFuse pipe exposure tool (PET) without damaging the core pipe. Once scored, the peelable skin is removed by hand revealing a pristine pipe surface which is ready to be jointed without further preparation using electrofusion or butt fusion jointing techniques.

ProFuse is ideally suited for more aggressive trenchless or no-dig installation methods. The tough protective skin on the pipe has been designed to absorb the damage that such challenging methods could produce in other types of pipe, making ProFuse the superior product in pipeline technology.

ProFuse peelable pipe is suitable for a range of water applications including drinking water, waste water and sewer.

## Features and Benefits of using ProFuse

- Optimum joint integrity**  
 The peelable skin reveals a pristine pipe surface on which to weld joints and requires no further preparation providing joint quality and integrity to your asset
- Reduced installation time**  
 The unique peelable skin is easily removed and reduces the time required to prepare larger diameter pipes for electrofusion socket fittings and saddles
- Damage protection**  
 Trenchless or no-dig installation methods such as pipe bursting or directional drilling can often result in damage to the pipe. The tough ProFuse skin offers excellent abrasion resistance and protects the pipe core
- Increased storage and stability**  
 The peelable skin offers full UV protection which increases the longevity and stability of the pipe and enables you to store the pipe for longer
- Full customisation**  
 A variety of skin and stripe colours, pipe sizes, wall thicknesses and pressure ratings are available to meet your exact requirements

## Specifications and Approvals

- ProFuse pipe**  
 Can be manufactured to WIS 4-32-17 (BSI kitemark), and DVGW 335A2 (black core pipe) new DVGW Cert GmbH pending
  - Electrofusion fittings**  
 Can be manufactured to EN12201-3 (Italian Institute of Plastics Certification), AS/NZS4129 (SAI Global Watermark), DVGW 335B2 (DVGW CERT GmbH)
- The main body of the QuickTee fitting can be manufactured to the electrofusion approvals listed in this brochure, while its unique socket is pending approval. Details of successful field trials are available
- Further details are available on request



## Compatible Fittings

### Electrofusion Fittings



Available in a variety of sizes and pins

### Fabricated Fittings



These fittings are butt fused in the workshop ready to be joined by butt fusion or electrofusion onsite

Radius offers a range of electrofusion and fabricated fittings that are compatible with ProFuse pipe

Visit: [www.radius-systems.com](http://www.radius-systems.com) for details

## ProFuse Projects

ProFuse pipe has been used in projects all over the world and in a variety of colours



**Purple ProFuse for NEWater, Singapore**  
 First large diameter polyethylene installation in Singapore as traditional metallic material proved unsuitable for above ground waste water use



**Dark blue ProFuse for Dee Valley Water, UK**  
 Sliplining project to replace an existing plate riveted water main beneath the river bed



**Black ProFuse with bespoke green stripe for Thames Water, UK**  
 Sewerage pumping main replacement using directional drilling



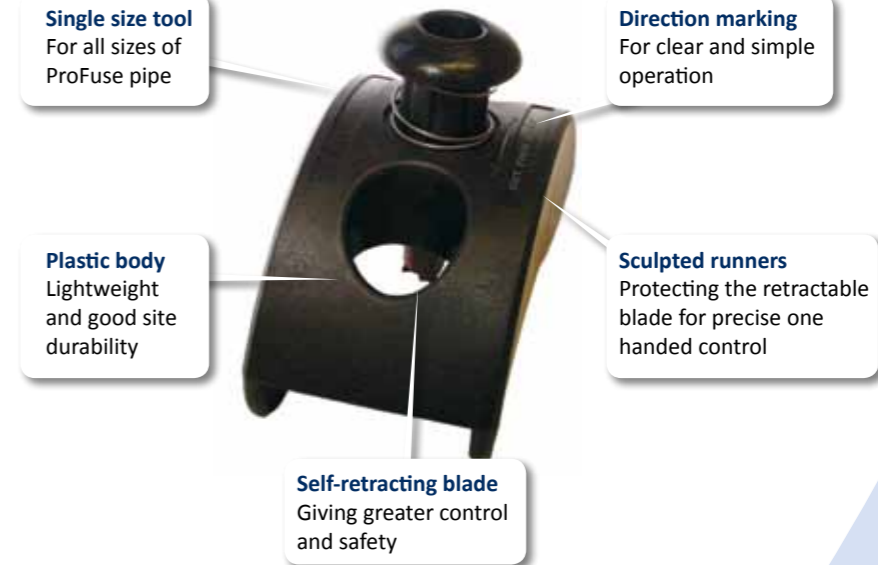
**Green ProFuse for Lyonnaise des Eaux, Gibraltar**  
 Sea water mains replacement using sliplining and pipe bursting techniques



**Black ProFuse with a brown stripe for Magnox North Sites, UK**  
 Effluent pipe refurbishment at nuclear power station using sliplining technique

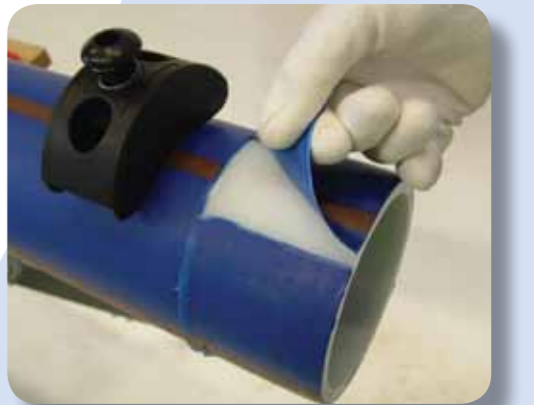
## Related Products

### ProFuse Pipe Exposure Tool (PET)



Recommended for the quick, simple and safe removal of ProFuse skin

Designed for the safe removal of the ProFuse skin. The hardened steel blade parts the skin and lifts its edge to allow it to be readily peeled.



### QuickTee Tapping Tee



The must-have innovative product for all your service connections.

The new QuickTee from Radius Systems is a technologically advanced electrofusion fitting developed to give substantial time and cost savings in water service connection operations.

The QuickTee's unique feature is that the base of the fitting is welded at the same time as the service outlet in one single fusion operation, compared to the current standard 2-weld connection carried out onsite. It also has its own built-in pipe clamping mechanism to secure the service pipe in place during the fusion cycle, removing the need for additional expensive tooling.

Quick and easy to install, QuickTee is simple to use and requires no additional training.



## Services and Training

We offer a range of services and training to help you correctly install Radius and other products. These include:

- Branch saddles
- Large diameter butt fusion welding
- Large diameter electrofusion welding
- Installation
- City & Guilds butt fusion
- City & Guilds electrofusion
- Bespoke fabricated fittings

The above services and training are provided by RadiusPLUS in the UK and UAE.

