



GAS & WATER SYSTEMS

NEW!

QuickTee

The new QuickTee from Radius Systems is a technologically advanced electrofusion fitting developed to bring substantial time and cost savings in gas and water service connection operations.

The **QuickTee** tapping tee has a unique feature whereby the base of the fitting is welded at the same time as the service outlet in one single fusion operation, compared to the current standard 2-weld connection carried out on site. In addition, the Radius Systems QuickTee has its own built-in pipe clamping mechanism which secures the service pipe in place during the fusion cycle, removing the need for additional expensive tooling.

Quick and easy to install, QuickTee is simple to use and requires no additional training. Approved to **EN 1555, GIS PL2; Part 4 for gas and EN 12201 Part 3 for water**, QuickTee is the 'must have' innovative product for all your service connections.



- **Single welding operation**

Our unique design enables 2 joints to be made in one single operation, saving considerable time on service installations

- **Ready-to-weld outlet**

No need to scrape the outlet of the fitting saving time on the connection

- **Integrated clamping mechanism**

With a unique clamping ring incorporated within the outlet of the fitting, there is no requirement for additional tooling

- **Fewer joints in the system**

QuickTee has been specifically designed to remove a fitting from the system, reducing stockholding requirements and wastage of small fittings

- **Less risk of leakages**

With fewer joints in the system, the risk of leakages is reduced therefore increasing the integrity of the system

- **Unifit range rated bases**

Minimises stockholding by using range rated bases capable of working on more than one pipe size.

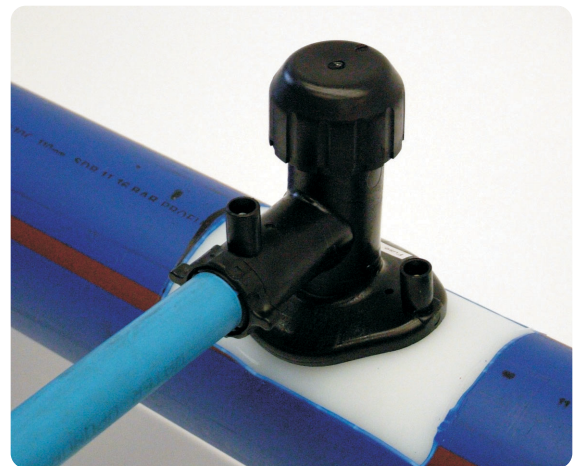
Product range

20mm and 25mm outlets

Size range	Product Code Gas	Product Code Water
20mm outlet		
63mm	63G12QT	-
75mm	75G12QT	-
90mm	90G12QT	-
110mm - 140mm	110G12QT	-
160mm - 180mm	160G12QT	-
25mm outlet		
63mm	63G13QT	63B13QT
75mm	75G13QT	75B13QT
90mm	90G13QT	90B13QT
110mm - 140mm	110G13QT	110B13QT
160mm - 180mm	160G13QT	160B13QT



If you would like more details on our QuickTee or if you would like to take advantage of the cost and time savings offered for all your service connections, then please contact our Customer Services Department on 01773 582313.



Radius Systems Limited
 Hilcote Plant, PO Box 1
 Blackwell, Nr Alfreton
 Derbyshire, DE55 5JD

T: +44 (0)1773 811112
F: +44 (0)1773 812343
E: sales@radius-systems.co.uk
W: www.radius-systems.com

