

# Electrofusion Fittings



**RADIUS**  
*Systems*

Catalogue 2009



# Market leading fittings compatible with all polyethylene pipes

- Manufactured in accordance with EN1555 & EN12201
- Available with 4mm or 4.7mm pin
- Supplied with universal barcode
- Large diameter fittings available with easigrip handles



**Head Office: Radius Systems Ltd**  
Hilcote Plant, PO Box 1, Blackwell,  
Nr Alfreton, Derbyshire, DE55 5JD, UK

**t:** +44 (0)1773 582320  
**f:** +44 (0)1773 582302

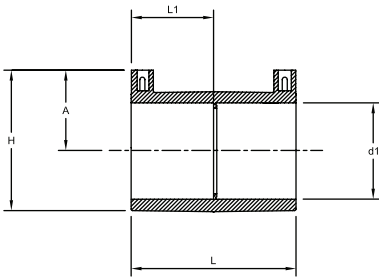
**Radius Systems Ltd**  
Scarva Road Industrial Estate, Banbridge,  
Co Down, BT32 3QD, UK

**t:** +44 (0)28 406 69999  
**f:** +44 (0)28 406 69996

**Radius Systems Ltd**  
PO Box 126086, Sheikh Zayed Road, Dubai, United Arab Emirates

**t:** +971 (0)4 304 2510  
**f:** +971 (0)4 304 2511

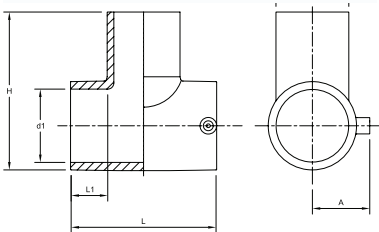
**e:** [enquiries@radius-systems.co.uk](mailto:enquiries@radius-systems.co.uk)  
**w:** [www.radius-systems.com](http://www.radius-systems.com)



- L Overall Length
- L1 Internal length to pipe stop
- A Height from centreline to top of shroud
- H Total height
- d1 Internal diameter
- S Spigot OD

## EF COUPLERS

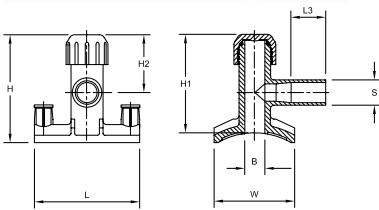
NOMINAL FITTING SIZE	BLACK PE100	YELLOW PE80	Fittings Dimensional Detail						
			L	L1	A	H	D1	Average Fitting wt ( kg )	Fittings Per Carton
20mm	WD069	GC069	83	37	35	47	20	0.027	20
25mm	WD070	GC070	81	40	37	53	25	0.032	20
32mm	WD071	GC071	81	39	41	62	32	0.051	20
40mm	WD072	GC072	88	43	45	65	40	0.080	20
50mm	WD073	GC073	99	48	54	81	50	0.132	10
63mm	WD075	GC075	105	52	61	95	63	0.169	10
75mm	WD076	GC076	124	61	65	112	75	0.305	12
90mm	WD077	GC077	125	61	75	127	90	0.388	10
110mm	WD078	GC078	164	81	87	150	110	0.716	12
125mm	WD079	GC079	155	76	96	170	125	0.882	10
140mm	WD080	GC080	194	94	101	178	140	1.076	10
160mm	WD081	GC081	186	92	120	207	160	1.811	2
180mm	WD083	GC083	207	102	120	235	180	2.398	2
200mm	WD085	GC085	210	103	139	275	200	3.307	2
225mm	WD089	GC089	218	107	145	311	225	3.592	2
250mm	WD091	GC091	219	108	164	317	250	4.438	2
280mm	WC095	TBA	283	138	180	320	280	5.860	2
315mm(40v)	WD097	GC098	266	130	197	380	317	8.746	1
315mm(80v)	x	GC164	266	130	197	380	315	8.746	1
355mm(40v)	TBA	x	322	159	197	406	355	9.200	1
355mm(80v)	WC166	GC167	322	159	223	406	355	9.200	1
400mm(80v)	WC168	GC169	345	170	247	455	400	13.300	1
450mm(80v)	WC170	GC171	380	188	266	496	450	17.000	1
500mm(80v)	WC174	GC175	380	188	286	553	500	21.500	1
560mm(80v)	WC176	TBA	398	197	323	647	560	26.000	1
630mm(80v)	WC178	TBA	405	200	360	723	630	32.500	1



- L Overall Length
- L1 Internal length to pipe stop
- A Height from centreline to top of shroud
- H Total height
- d1 Internal diameter
- S Spigot OD

## EF EQUAL TEES

NOMINAL FITTING SIZE	BLACK PE100	YELLOW PE80	Fittings Dimensional Detail							
			L	L1	A	H	D1	S	Average Fitting wt ( kg )	Fittings Per Carton
20mm	WD569	GC569	100	39	35	98	20	20	0.074	10
25mm	WD570	GC570	100	41	37	98	25	25	0.061	10
32mm	WD571	GC571	109	42	41	109	32	32	0.086	10
40mm	WD572	GC572	128	46	45	119	40	40	0.143	8
50mm	WD573	GC573	143	50	53	140	50	50	0.235	6
63mm	WD575	GC575	170	61	60	204	63	63	0.491	5
75mm	WD576	GC576	200	59	68	223	75	75	0.677	4
90mm	WD577	GC577	228	77	77	227	90	90	1.125	4
110mm	WD578	GC578	250	80	85	282	110	110	1.738	4
125mm	WD579	GC579	275	86	99	301	125	125	2.433	4
160mm	WD581	GC581	340	105	120	356	160	160	4.389	1
180mm	WD583	GC583	361	106	129	391	180	180	6.112	1

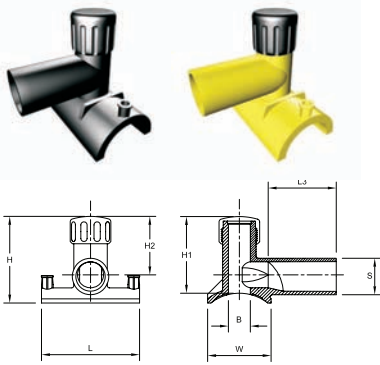


- L Overall Length
- L3 End of spigot to beginning of base
- H Total height
- H1 Height from crown of pipe
- H2 Height from centreline of outlet
- S Spigot OD
- B Bore size of cutter
- W Width

## EF STACK LOAD TAPPING TEES; 32mm OUTLET

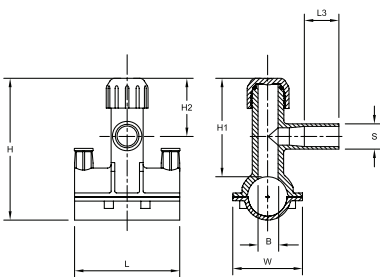
NOMINAL FITTING SIZE	BLACK PE100	YELLOW PE80	Fittings Dimensional Detail									
			L	L3	H	H1	H2	S	B	W	Average Fitting wt ( kg )	Fittings Per Carton
40x32mm	WE083	GE083	51	47	141	109	61	32	22	115	0.300	5
63x32mm	WE086	GE086	77	40	131	100	61	32	22	115	0.300	5
75x32mm	WE087	GE087	75	40	120	100	61	32	22	115	0.300	5
90x32mm	WE088	GE088	90	33	120	100	61	32	22	115	0.300	5
UF 110-140x32mm	WE091	GE091	83	37	118	105	61	32	22	115	0.300	5
UF 160-180x32mm	WE097	x	88	34	116	105	61	32	22	115	0.300	5
UF 160-200x32mm	x	GE097	88	34	116	105	61	32	22	115	0.300	5
UF 200-250x32mm	WE103	x	90	32	113	105	61	32	22	115	0.300	5
UF 225-280x32mm	x	GE103	90	32	113	105	61	32	22	115	0.300	5
UF 280-355x32mm	WE111	x	90	32	110	105	61	32	22	115	0.300	5
UF 315-400x32mm	x	GE109	90	32	110	105	61	32	22	115	0.300	5
UF 400-500x32mm	WE115	x	90	32	110	105	61	32	22	115	0.300	5
UF 450-500x32mm	x	GE116	90	32	110	105	61	32	22	115	0.300	5

## EF STACK LOAD TAPPING TEES; 63mm OUTLET



- L Overall Length
- L3 End of spigot to beginning of base
- H Total height
- H1 Height from crown of pipe
- H2 Height from centreline of outlet
- S Spigot OD
- B Bore size of cutter
- W Width

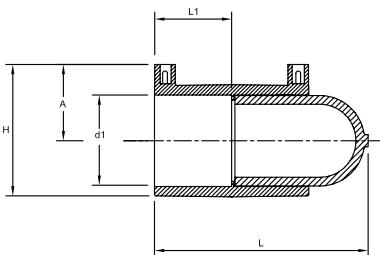
NOMINAL FITTING SIZE	BLACK PE100	YELLOW PE80	Fittings Dimensional Detail								Average Fitting wt ( kg )	Fittings Per Carton
			L	L3	H	H1	H2	S	B	W		
63x63mm	WE211	GE211	77	130	156	125	96	63	37	170	0.760	5
90x63mm	WE213	GE213	100	118	156	125	96	63	39	170	0.760	5
UF 110-125x63mm	WE216	GE216	105	116	150	125	96	63	39	170	0.760	5
140x63mm	WE217	x	110	113	142	125	96	63	39	170	0.760	5
UF 140-180x63mm	x	GE221	110	113	142	125	96	63	39	170	0.760	5
UF 160-180x63mm	WE221	x	110	113	142	127	96	63	39	170	0.760	5
200x63mm	WE222	x	110	113	136	125	96	63	39	170	0.760	5
UF 225-280x63mm	WE226	x	110	113	136	125	96	63	39	170	0.760	5
UF 225-250x63mm	x	GE226	110	113	136	125	96	63	39	170	0.760	5
UF 280-315x63mm	x	GE232	110	113	136	125	96	63	39	170	0.760	5
UF 315-355x63mm	WE232	x	110	113	134	125	96	63	39	170	0.760	5
UF 355-450x63mm	x	GE236	110	113	134	125	96	63	39	170	0.760	5
UF 400-450x63mm	WE235	x	110	113	132	125	96	63	39	170	0.760	5
500x63mm	x	GE243	110	113	132	125	96	63	39	170	0.760	5



- L Overall Length
- L3 End of spigot to beginning of base
- H Total height
- H1 Height from crown of pipe
- H2 Height from centreline of outlet
- S Spigot OD
- B Bore size of cutter
- W Width

## EF UNDERCLAMP TAPPING TEE

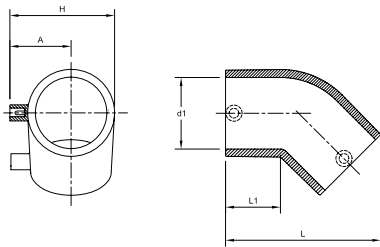
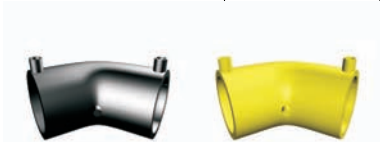
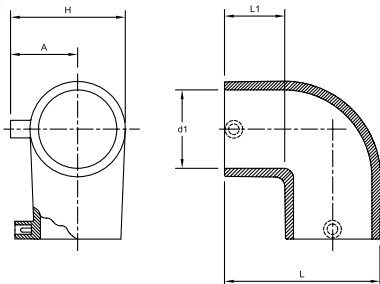
NOMINAL FITTING SIZE	BLACK PE100	Fittings Dimensional Detail								Average Fitting wt ( kg )	Fittings Per Carton
		L	L3	H1	H2	S	B	W			
40x20mm	WF001	92	46	127	99	20.15	25	115	0.410	5	
50x20mm	WF002	92	46	127	99	20.15	25	115	0.410	5	
63x20mm	WF004	110	46	127	99	20.15	25	115	0.410	5	
75x20mm	WF005	124	46	127	99	20.15	25	115	0.664	5	
90x20mm	WF006	139	46	127	99	20.15	25	115	0.708	5	
110x20mm	WF007	159	46	127	99	20.15	25	115	0.768	5	
160x20mm	WF011	209	46	127	99	20.15	25	115	0.490	5	
40x25mm	WF042	92	46	127	99	25.15	25	115	0.591	5	
50x25mm	WF043	99	46	127	99	25.15	25	115	0.598	5	
63x25mm	WF045	110	46	127	99	25.15	25	115	0.635	5	
75x25mm	WF046	124	46	127	99	25.15	25	115	0.670	5	
90x25mm	WF047	139	46	127	99	25.15	25	115	0.430	5	
110x25mm	WF048	159	46	127	99	25.15	25	115	0.774	5	
160x25mm	WF052	209	46	127	99	25.15	25	115	0.905	5	
40x32mm	WF083	92	46	127	99	32.15	25	115	0.596	5	
50x32mm	WF084	99	46	127	99	32.15	25	115	0.609	5	
63x32mm	WF086	110	46	127	99	32.15	25	115	0.640	5	
75x32mm	WF087	124	46	127	99	32.15	25	115	0.683	5	
90x32mm	WF088	139	46	127	99	32.15	25	115	0.715	5	
110x32mm	WF089	159	46	127	99	32.15	25	115	0.781	5	
160x32mm	WF094	209	46	127	99	32.15	25	115	0.907	5	



- L Overall Length
- L1 Internal length to pipe stop
- A Height from centreline to top of shroud
- H Total height
- d1 Internal diameter

## EF CAPS

NOMINAL FITTING SIZE	BLACK PE100	YELLOW PE80	Fittings Dimensional Detail					Average Fitting wt ( kg )	Fittings Per Carton
			L	L1	A	H	D1		
20mm	WD319	GC319	92	37	35	47	20	0.045	20
25mm	WD320	GC320	97	40	37	53	25	0.054	20
32mm	WD321	GC321	106	39	41	62	32	0.063	20
40mm	WD322	GC322	112	43	45	65	40	0.089	10
50mm	WD323	GC323	120	48	54	81	50	0.115	10
63mm	WD325	GC325	147	52	61	95	63	0.273	10
90mm	WD327	GC327	185	61	75	127	90	0.674	10
110mm	WD328	GC328	242	81	87	150	110	1.112	10
125mm	WD329	GC329	237	76	96	170	125	1.568	10
160mm	WD331	GC331	293	92	120	207	160	3.043	2
180mm	WD333	GC333	320	102	120	235	180	4.269	2
200mm	WD335	GC335	350	103	139	275	200	4.740	2
250mm	WD341	GC341	366	108	164	317	250	6.330	1

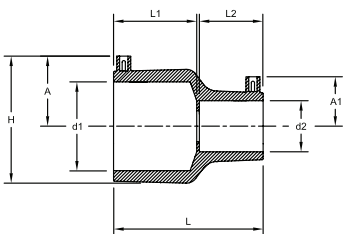
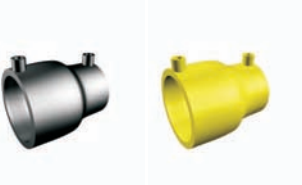


- L Overall Length
- L1 Internal length to pipe stop
- A Height from centreline to top of shroud
- H Total height
- d1 Internal diameter

## EF ELBOWS (45 & 90 DEGREES)

ELBOW STYLE	NOMINAL FITTING SIZE	BLACK PE100	YELLOW PE80	Fittings Dimensional Detail						
				L	L1	A	H	D1	Average Fitting wt ( kg )	Fittings Per Carton
90 DEGREE	25mm	WD895	GC895	73	41	35	73	25	0.047	20
	32mm	WD896	GC896	83	40	41	83	32	0.077	20
	40mm	WD897	GC897	96	45	45	96	40	0.115	10
	50mm	WD898	GC898	111	50	55	111	50	0.215	10
	63mm	WD900	GC900	140	58	60	140	63	0.398	10
	75mm	WD901	GC901	155	59	68	155	75	0.538	10
	90mm	WD902	GC902	190	77	76	190	90	0.976	5
	110mm	WD903	GC903	216	80	86	216	110	1.385	3
	125mm	WD904	GC904	242	82	99	242	125	2.137	2
	160mm	WD906	GC906	298	100	119	298	160	3.859	1
	180mm	WD907	GC907	324	101	129	324	180	5.164	1
	45 DEGREE	63mm	WD878	GC878	167	58	60	100	63	0.322
75mm		WD879	GC879	180	59	68	119	75	0.432	4
90mm		WD880	GC880	222	77	76	129	90	0.820	6
110mm		WD881	GC881	243	80	86	150	110	1.154	3
125mm		WD882	GC882	269	82	99	173	125	1.843	2
160mm		WD884	GC884	326	100	119	210	160	3.255	2
180mm		WD885	GC885	350	101	129	236	180	4.105	1

## EF REDUCERS



- L Overall Length
- L1 Internal length to pipe stop
- L2 Internal length to pipe stop (reducer)
- A Height from centreline to top of shroud
- A1 Height from centreline to top of shroud (reducer)
- H Total height
- d1 Internal diameter
- d2 Internal diameter (reducer)

NOMINAL FITTING SIZE	BLACK PE100	YELLOW PE80	Fittings Dimensional Detail								Average Fitting wt ( kg )	Fittings Per Carton
			L	L1	L2	A	A1	H	D1	D2		
25x20mm	WB160	GA160	82	41	38	37	38	51	25	20	0.039	20
32x20mm	WB162	GA162	89	43	39	41	35	58	32	20	0.047	20
32x25mm	WB163	GA163	89	45	42	41	37	58	32	25	0.050	20
40x32mm	WB166	GA165	89	44	42	65	57	58	40	32	0.069	20
50x32mm	WB167	GA166	99	48	44	50	41	80	50	32	0.095	10
63x32mm	WB170	GA170	117	50	41	59	44	96	63	32	0.157	10
63x40mm	WB171	GA171	116	58	49	59	48	96	63	40	0.185	10
63x50mm	WB172	GA172	116	56	47	59	53	97	63	50	0.197	10
90x63mm	WB177	GA177	154	80	59	77	60	134	90	63	0.501	10
90x75mm	WB178	GA178	154	77	62	75	75	117	90	75	0.672	10
110x63mm	WB179	GA179	188	76	57	86	62	151	110	63	0.812	12
110x90mm	WB181	GA181	188	85	78	86	76	152	110	90	0.834	12
125x63mm	WB182	GA182	164	90	65	99	60	175	125	63	0.955	10
125x90mm	WB184	GA184	180	89	76	94	77	171	125	90	1.042	10
160x110mm	WB188	GA188	230	105	99	119	86	215	160	110	1.838	2
180x125mm	WB191	GA191	197	115	77	120	96	228	180	125	1.897	2
200x160mm	WB196	GA196	240	112	104	139	119	262	200	160	3.223	1
225x160mm	WB204	GA204	240	115	105	152	119	284	225	160	3.645	2
250x180mm	WB212	GA215	240	110	89	164	129	316	250	180	4.731	2
315x250mm	WB225	GA409	275	133	100	194	164	425	315	250	8.255	1

**NEW!**

# QuickTee

The new QuickTee from Radius Systems for time and cost savings in gas connection operations.



- **Single welding operation**

2 joints can be made in one single operation - saves considerable time on service installations

- **Ready-to-weld socket outlet**

No need to scrape the outlet of the fitting - saves time on the connection

- **Integrated clamping mechanism**

Unique clamping ring incorporated within outlet of fitting - no requirement for additional tooling

- **Fewer joints in the system**

QuickTee incorporates a socket outlet which overcomes the need for an electrofusion socket fitting

- **Less risk of leakages**

Fewer joints in the system - risk of leakage is reduced for increased system integrity

For more information on the new QuickTee from Radius Systems

call: +44 (0)1773 582320

fax: +44 (0)1773 582302

or email: [enquiries@radius-systems.co.uk](mailto:enquiries@radius-systems.co.uk)

Size range	Product Code Yellow	Product Code Black
<b>20mm outlet</b>		
63mm	GE304	WE304
75mm	GE305	WE305
90mm	GE306	WE306
110mm - 140mm	GE308	WE308
160mm - 180mm	GE313	WE313
<b>25mm outlet</b>		
63mm	GE345	WE345
75mm	GE346	WE346
90mm	GE347	WE347
110mm - 140mm	GE349	WE349
160mm - 180mm	WE354	WE354



**RADIUS**  
Systems